

# Indoor termination Type AIN 30

for EPR- and XLPE-insulated cables, max. 36 kV



DESITEK AVS

## Important!

During installation, cable and associated apparatus must be completely disconnected, locked out and tagged in order to prevent accidental re-connection. Installation is only allowed for skilled personnel with the necessary education and knowledge of relevant safety instructions. Read through instructions before starting the installation. Use only approved dedicated special tools for removal of cable sheath, easy-strip layer and XLPE insulation. Avoid excess use of solvents.



Table 1

Termination size	DESITEK Art. No.		XLPE diameter [mm]
	For 3 pcs. 1-core	For 1 pcs 3-core*	
1	AIN30-1-0	AIN30-1-1	23,5 - 29
2	AIN30-2-0	AIN30-2-1	27 - 38
3	AIN30-3-0	AIN30-3-2	32 - 43

\* See separate instructions for cable break-out kit

Table 2

Termination size	XLPE diameter [mm]	X [mm]
1	23,5 - 26	235
	26 - 29	230
2	27 - 30,6	230
	30,6 - 34,1	225
	34,1 - 38	220
3	32 - 38	235
	38 - 43	225

## Cable preparation

### 1-core copper wire screened cables

1) Temporarily install the cable lug on to the equipment and hold the cable next to it, see image 1.

2) Mark the bottom of the cable lug on the cable (reference point A). Note: Foresee extra screen wire length if needed.

3) Measure the depth of the cable lug bore (length L) and mark this distance above the reference point A on the cable (reference point B).

4) Cut cable at "B".

5) Remove the outer cable sheath for a distance  $X + L + 30$  mm from the reference point B. See image 2 and table 2. Take care not to bend or break screen wires. Remove the counter helix copper tape(s).

Image 1

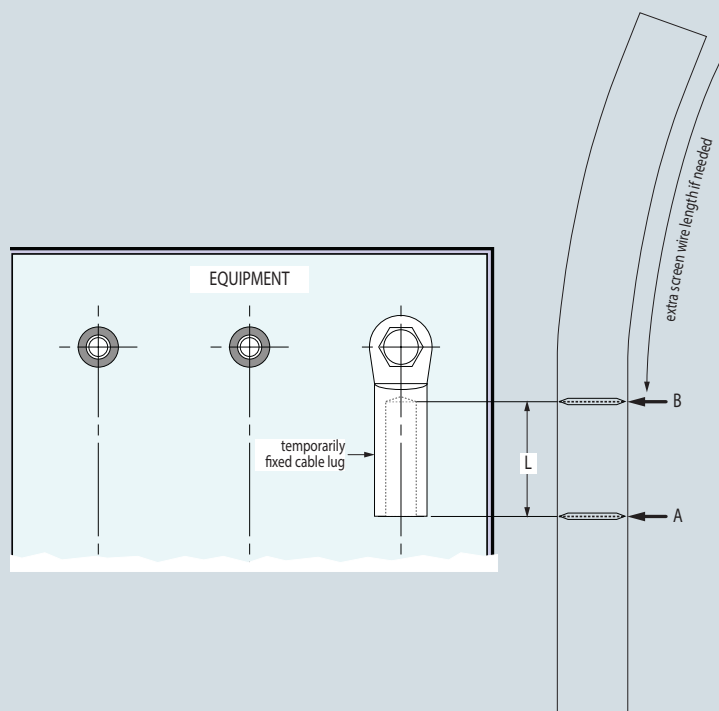


Image 2

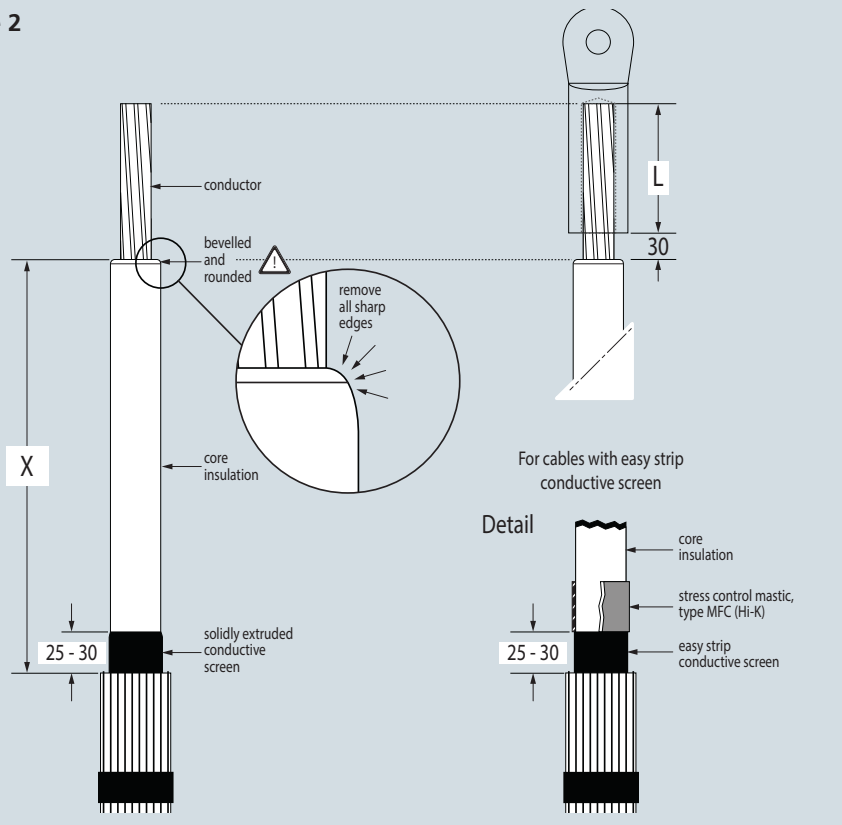


Image 5

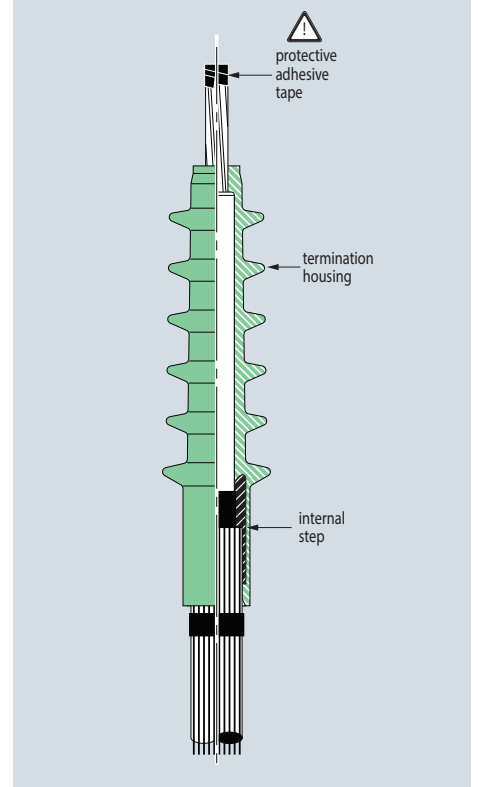


Image 3

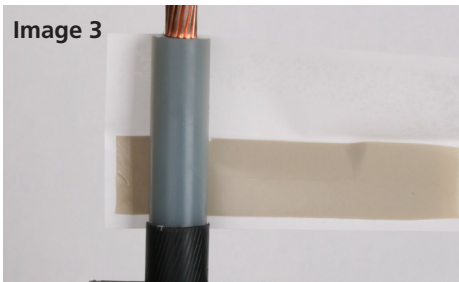
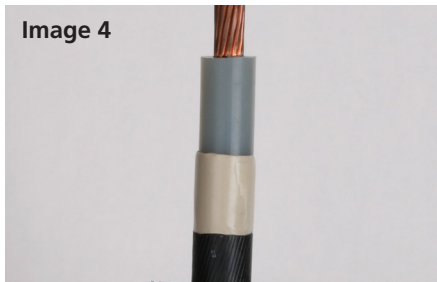


Image 4



Make sure to remove all sharp edges.

6) Bend all the copper screen wires downwards, around the outer sheath. Using adhesive tape, secure the screen wires approx. 60 mm below the edge of the outer sheath.

7) Remove the insulation for a distance of  $L + 30$  mm. To ensure the termination slips on easily, the edge of the core insulation should be rounded and slightly smoothed using the supplied emery cloth.

**8a) For cables with easy strip conductive insulation screen:**

Remove screen to 25-30 mm from the edge of cable sheath. Apply one layer of stress control mastic on the core insulation, flush with the easy strip conductive screen. Squeeze it tightly in place using the coated side of the paper. See image 4.

**8b) For cables with solidly extruded conductive insulation screen:**

Remove the insulation screen with an appropriate tool (DESITEK item 5610382 or

similar) up to 25-30 mm above the edge of the outer sheath with a conical transition to the XLPE insulation.

9) Remove burrs from the conductor and as a protection, wrap a few turns of adhesive tape around the conductor end.

## Installing the termination

10) Remove any trace of conductive residue from the core insulation.

11) Lubricate core insulation and the inner surface of the termination (use only the silicone lubricant supplied).

12) Push the termination on the cable (do not turn), until the internal step in the bottom part of the termination butts against the cable outer sheath, see image 5. Remove protective tape from the conductor.

13) For crimp contacts: Crimp according to

## Other cable types

For cables with Cu foil-screen and multi-core cables etc., please contact DESITEK.

specification. For bolted contacts: Tighten the screws, refer to the installation instruction included with the contact. Remove any burrs after crimping/tightening and wipe off excess inhibitor.

14) Pull the screen wires to one side of the termination and twist them together to form a pigtail and fit in the earthing cable lug. Crimp the cable lug. Connect screen wires to the system earth.

15. Clamp the cable as close as possible to the termination.